

# NetBeans Configuration and Usage

## Windows XP

Version 1.3, March 2007

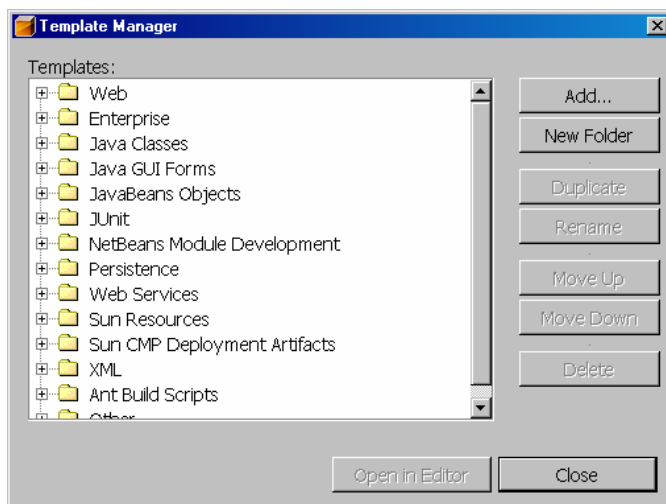
### 1 Distribution

Free download from [www.netbeans.org/downloads](http://www.netbeans.org/downloads). Select the language and the operating system.

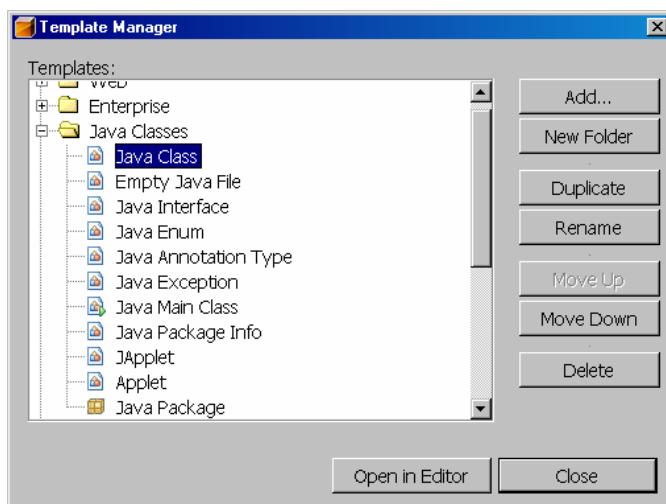
### 2 Configuration

#### 2.1 Setup the templates for your convenience

Select *Tools / Template Manager*:



Open *Java Classes* and select *Java Class*:



Click *Open in Editor* and replace text. When you often use the packages `ch.aplu.turtle` and `ch.aplu.util` use copy & paste from here:

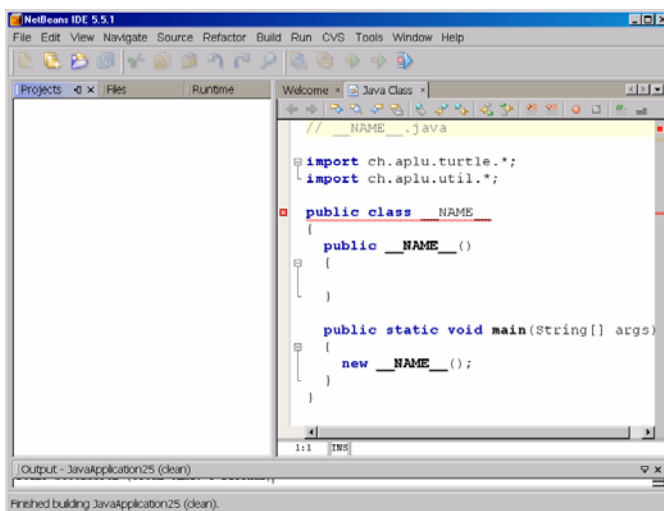
```
// __NAME__.java

import ch.aplu.turtle.*;
import ch.aplu.util.*;

public class __NAME__
{
    public __NAME__()
    {

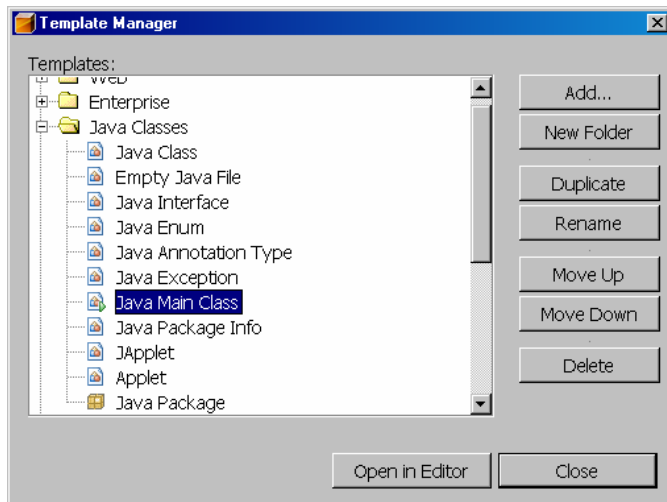
    }

    public static void main(String[] args)
    {
        new __NAME__();
    }
}
```



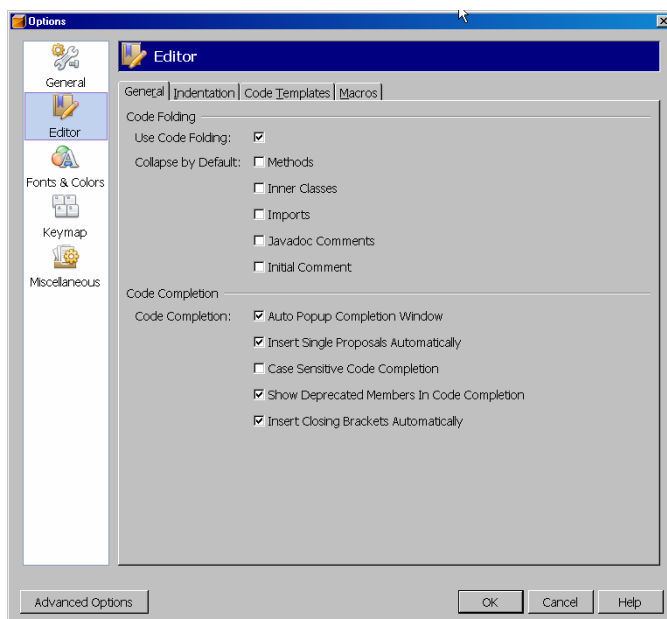
Press *Ctrl-S* to save.

Do the same for template *Java Main Class*:

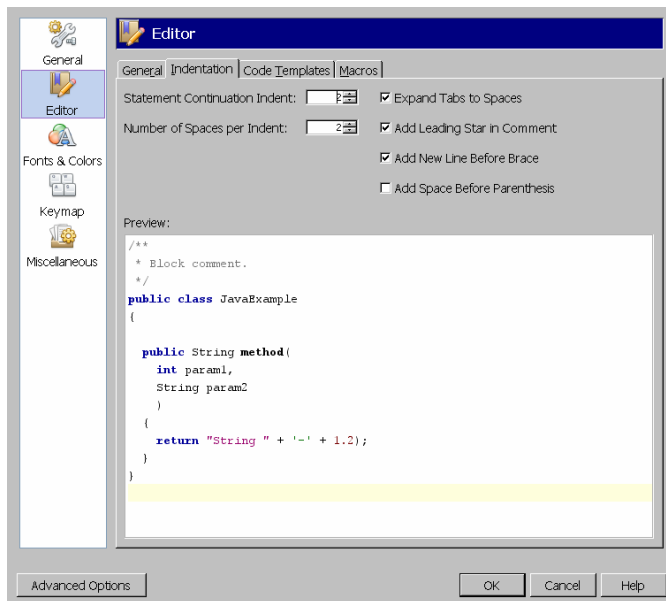


## 2.2 Setup the format option

Select *Tools / Options* and click on icon *Editor* in the left pane:



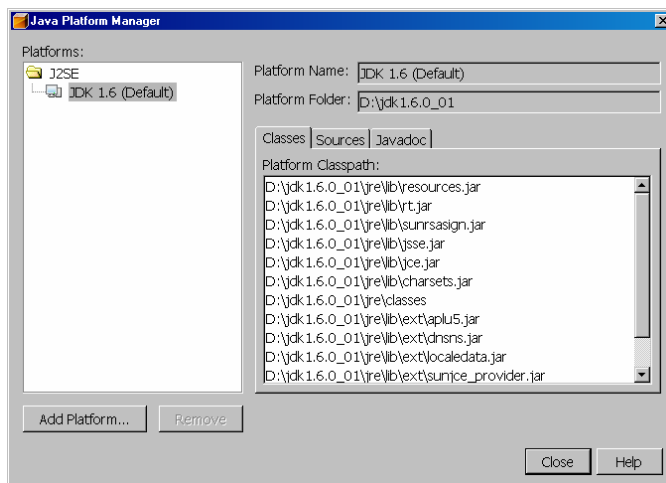
Select tab *Indentation* and change indent values to 2. Check *Add New Line Before Brace*:



Click *OK*.

## 2.3 Install additional libraries and the context-sensitive help

Select *Tools / Java Platform Manager*:



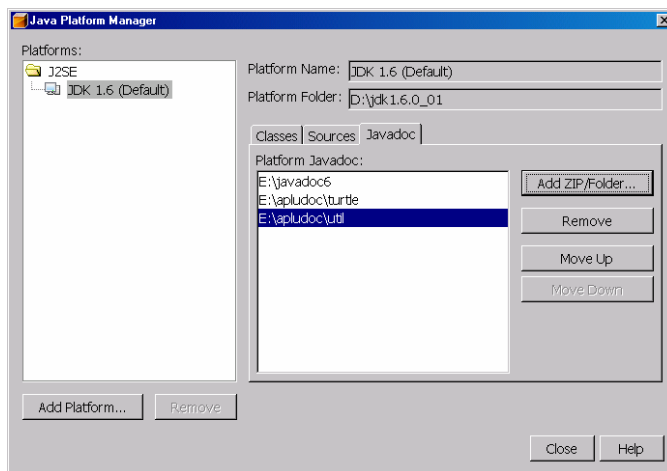
Write down for later use the home directory of the Java JDK under *Platform Folder* (here `D:\jdk1.6.0_01`).

Click tab *Javadoc*. Click *Add ZIP/Folder..*" and enter locations of all additional Java docs, e.g.

`E:\javadoc6` : Java API doc

`E:\apludoc\turtle` : JavaDoc for package `ch.aplu.turtle`

E:\apludoc\util : JavaDoc for package ch.aplu.util



Click *Close*.

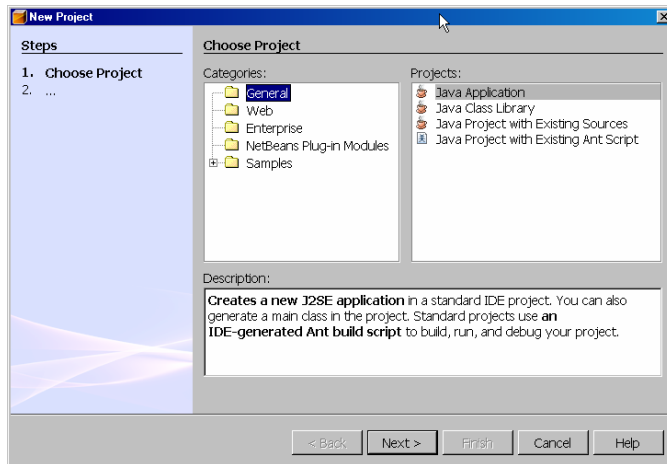
This enables context-sensitive help in the source editor: Placing the cursor on class name or public method and press *Alt-F1* will open the JavaDoc. You may also perform an index search by pressing *Shift-F1* and entering a search string.

Copy additional jar files in folder *javahome\jre\lib\ext*, e.g copy *aplu5.jar* into folder *D:\jdk1.6.0\_01\jre\lib\ext*.

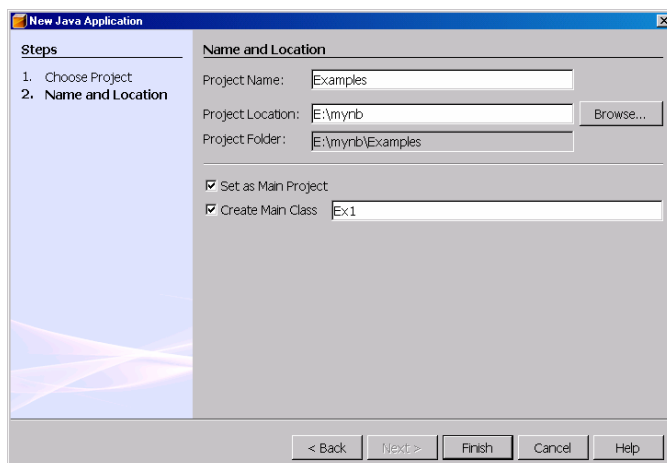
### 3 Usage

To edit, compile and run a program, do

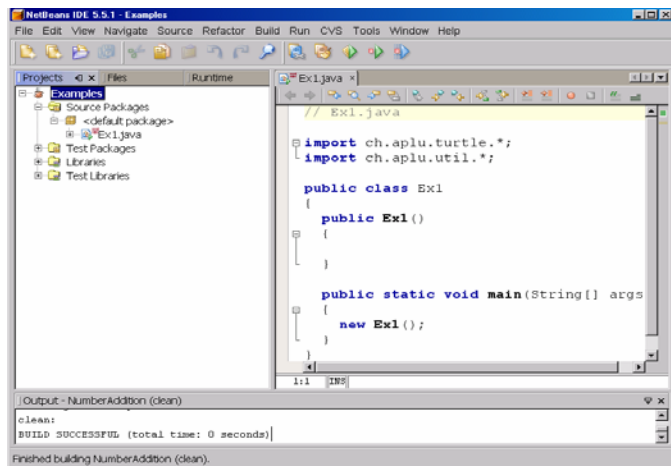
*File / New Project*



Click *Next*. Enter the project name, e.g. *Examples*, the project location, e.g. *E:\mynb* and name of the class you want to create in *Create Main Class*, e.g. *Ex1*. Click *Finish*.



*Ex1.java* opens in the source-editor:



Add a line to create a turtle window, e.g.

```
private Turtle t = new Turtle();
```

To compile and run press function key *F6*. The turtle window must open.  
Modify the source and compile/run with *F6*.

In order to test the context-sensitive help, place the cursor on *Turtle* and press *Alt-F1*. The JavaDoc must open. Place the cursor on *String* and press *Alt-F1*. This will open the Java Api-Doc.

### More help:

[wiki.netbeans.info/wiki/view/NetBeansUserFAQ](http://wiki.netbeans.info/wiki/view/NetBeansUserFAQ)